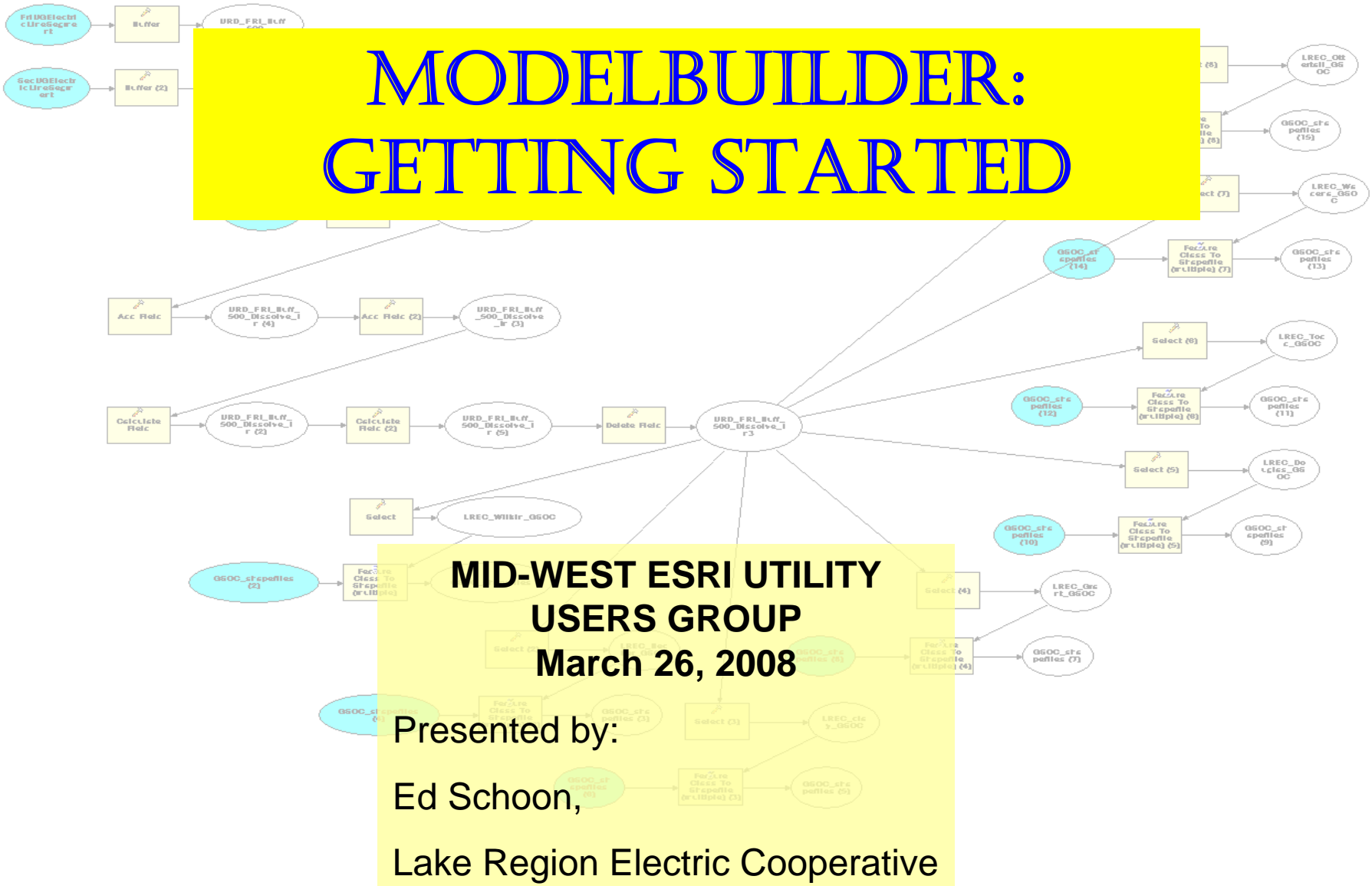
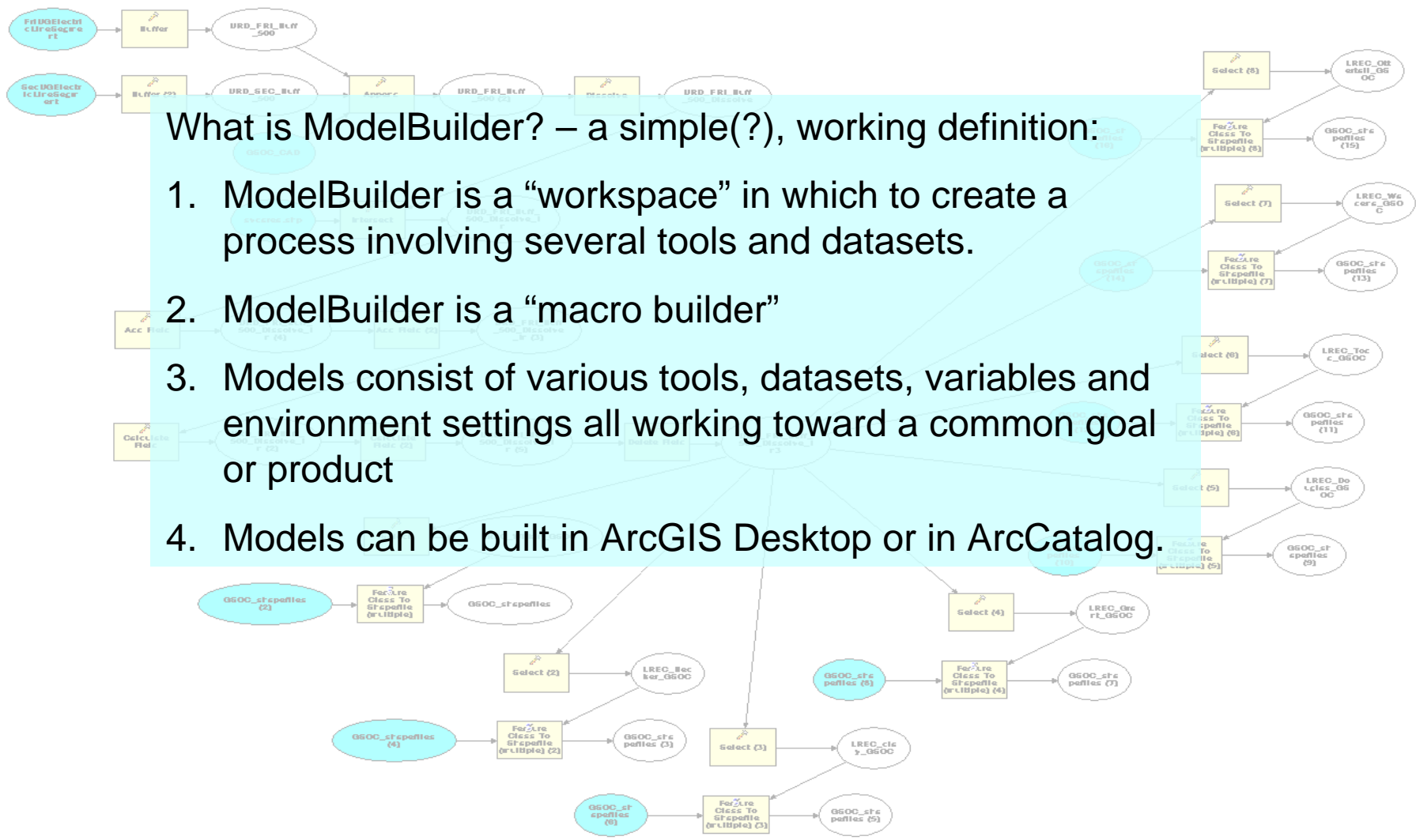


MODEL BUILDER: GETTING STARTED



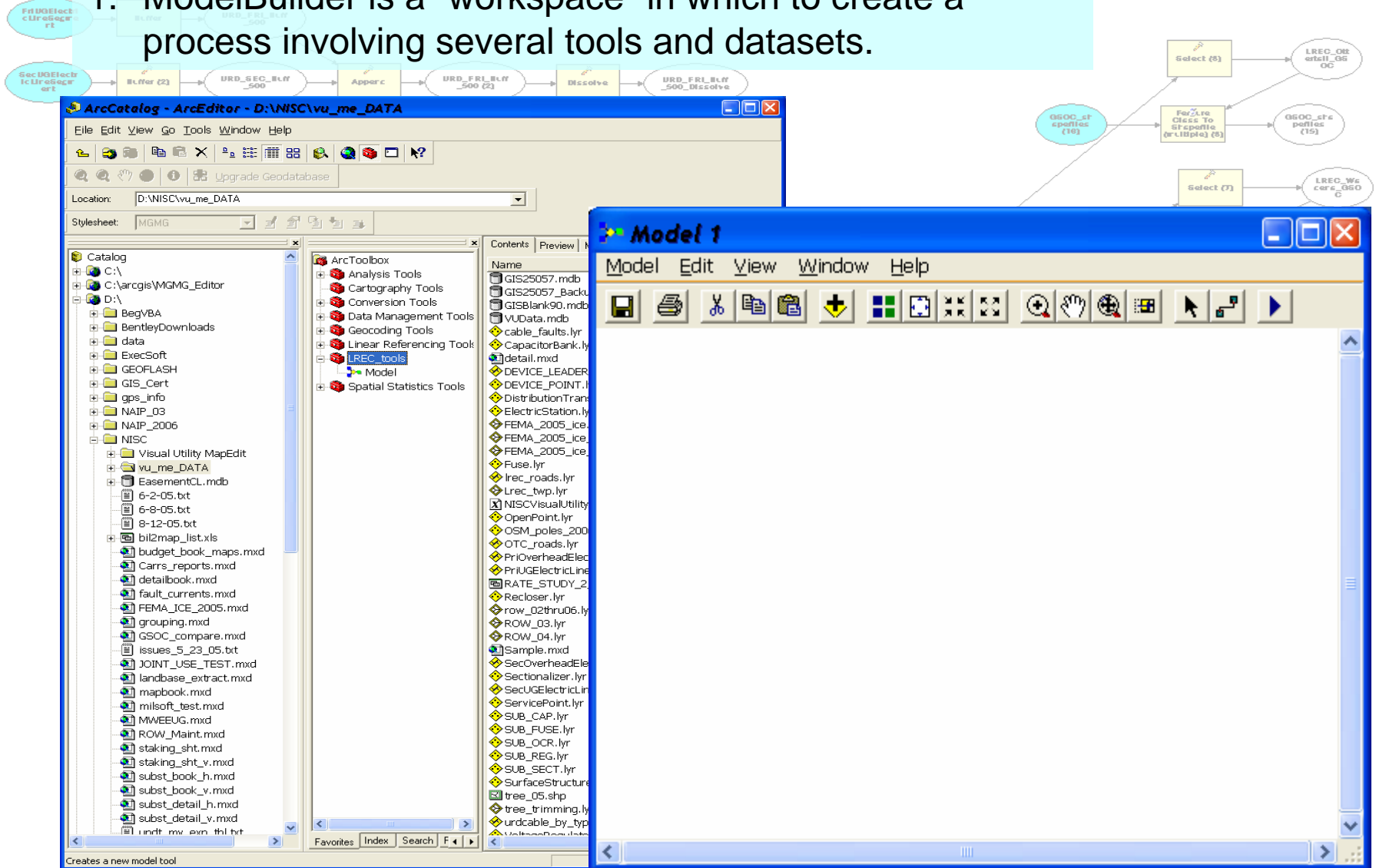


What is ModelBuilder? – a simple(?), working definition:

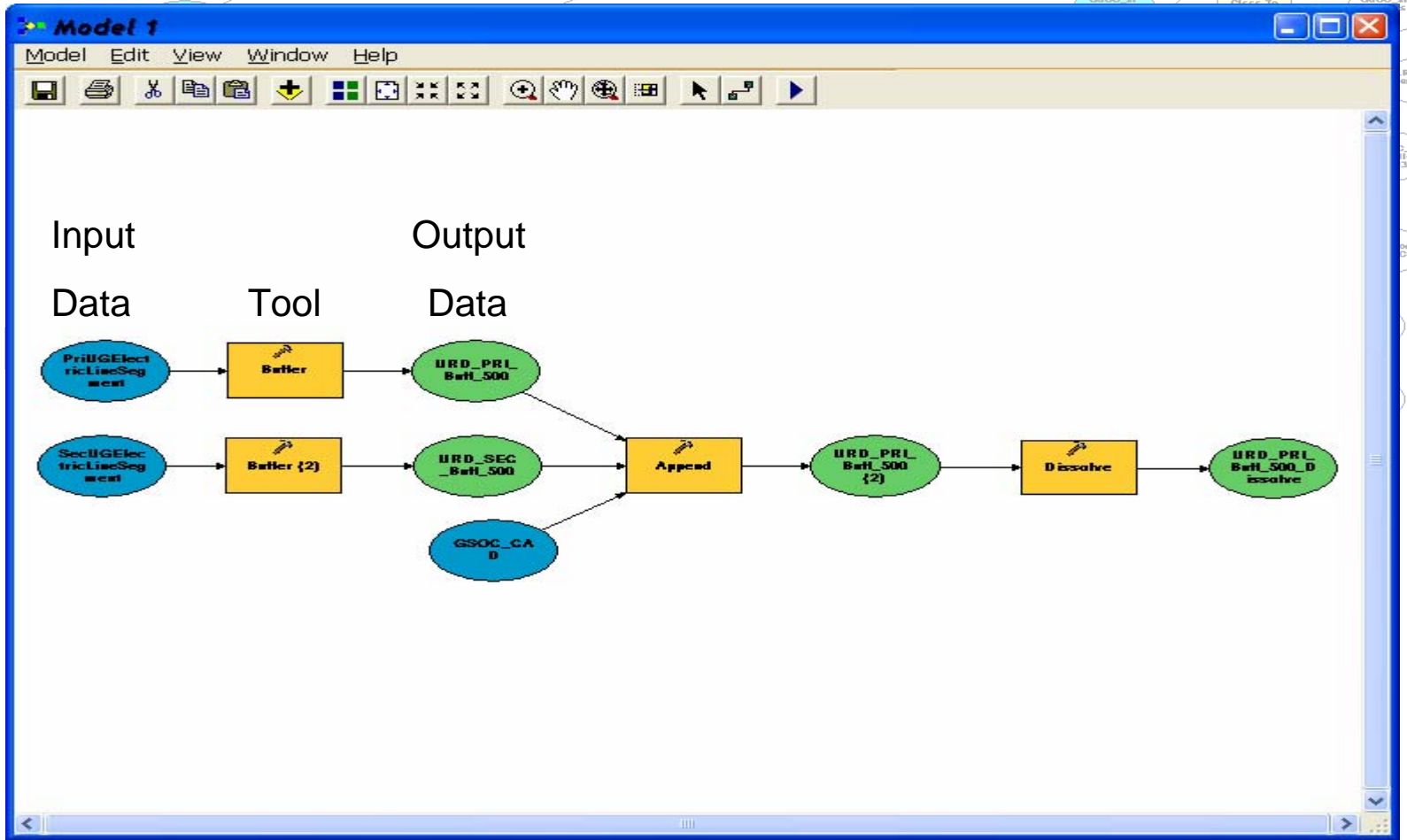
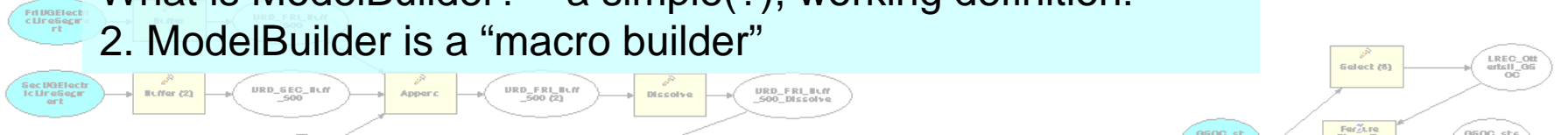
1. ModelBuilder is a “workspace” in which to create a process involving several tools and datasets.
2. ModelBuilder is a “macro builder”
3. Models consist of various tools, datasets, variables and environment settings all working toward a common goal or product
4. Models can be built in ArcGIS Desktop or in ArcCatalog.

What is ModelBuilder? – a simple(?), working definition:

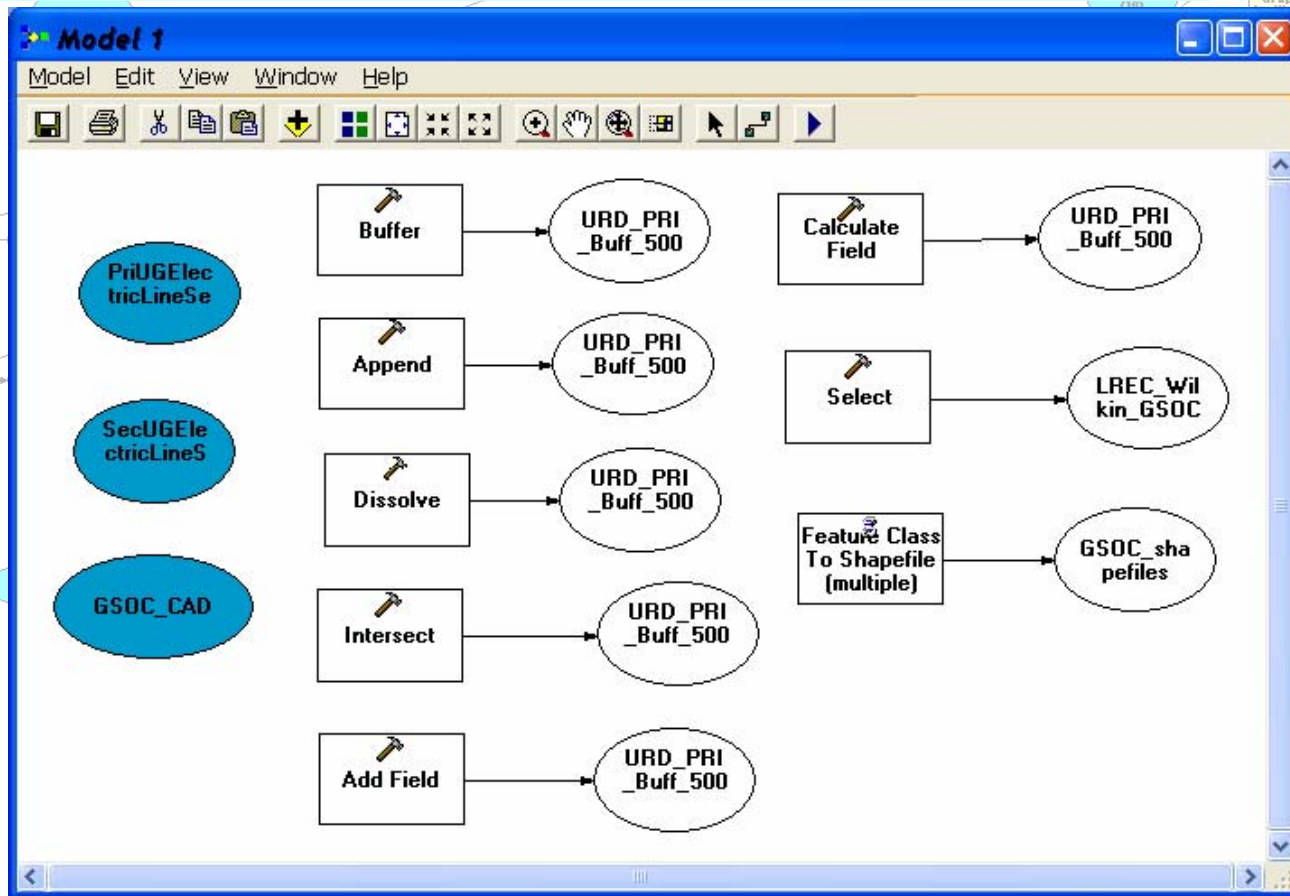
1. ModelBuilder is a “workspace” in which to create a process involving several tools and datasets.



What is ModelBuilder? – a simple(?), working definition:
 2. ModelBuilder is a “macro builder”

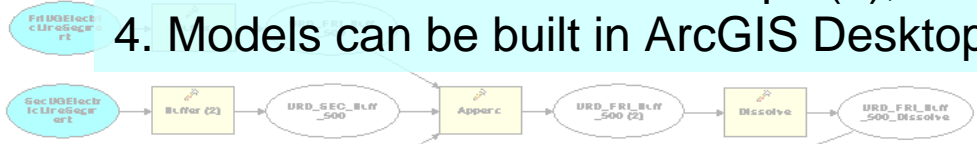


What is ModelBuilder? – a simple(?), working definition:
 3. Models consist of various tools, datasets, variables and environment settings all working toward a common goal or product



What is ModelBuilder? – a simple(?), working definition:

4. Models can be built in ArcGIS Desktop or in ArcCatalog.

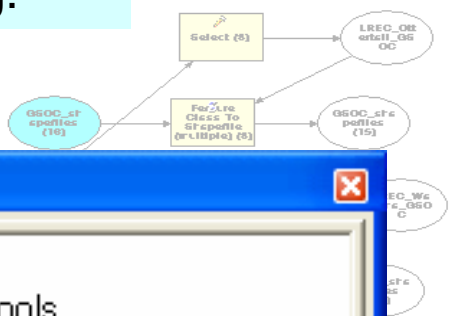
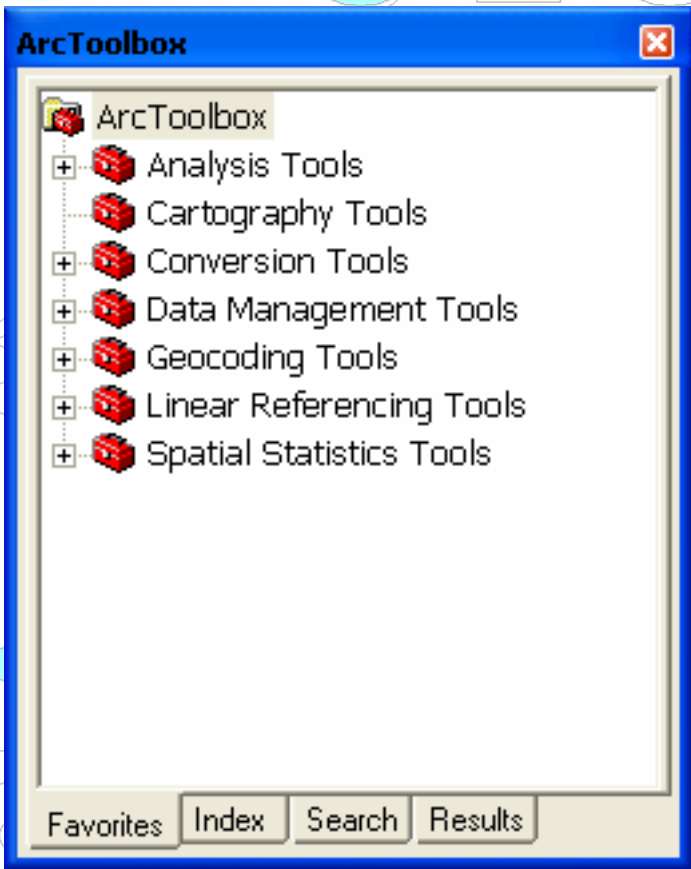
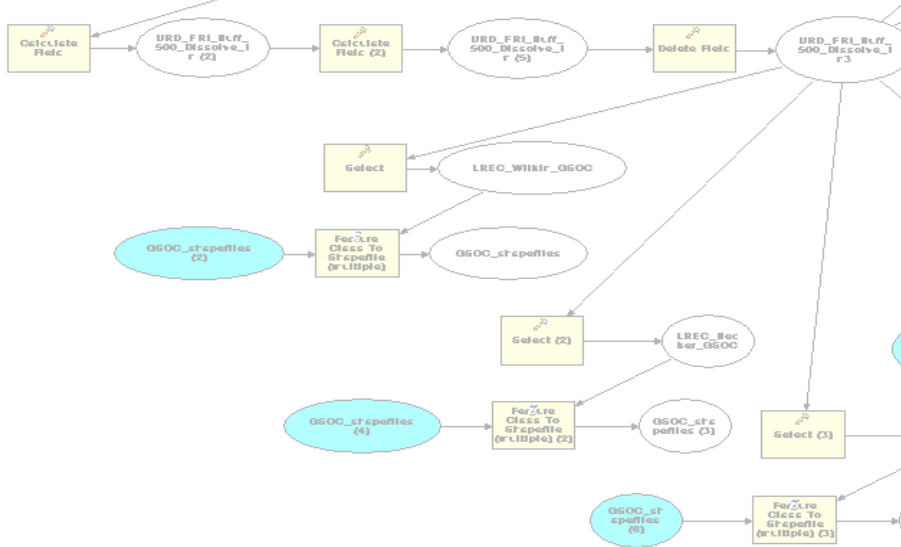


Same tools available in both areas

“Drag & Drop” tools into model

Can be “scheduled” to run at a set time

Some tools are “license sensitive”



How to start:

1. Define your goals/sketch the process

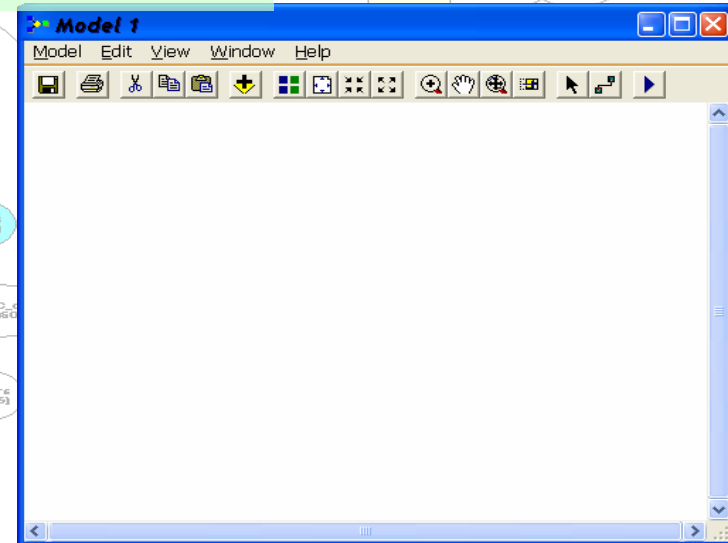
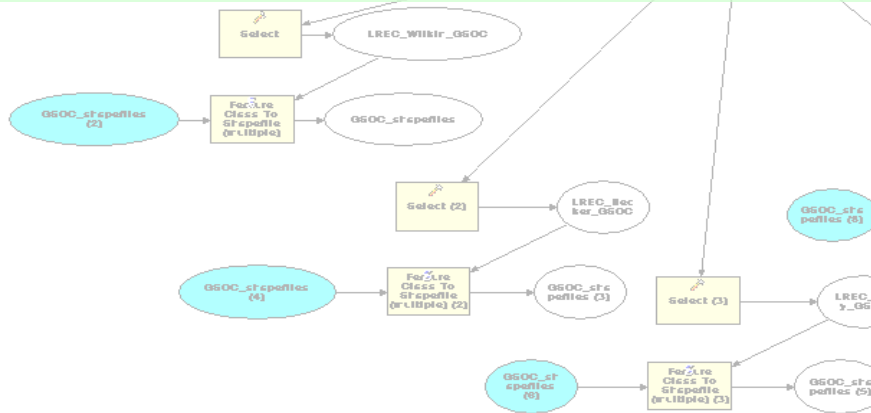
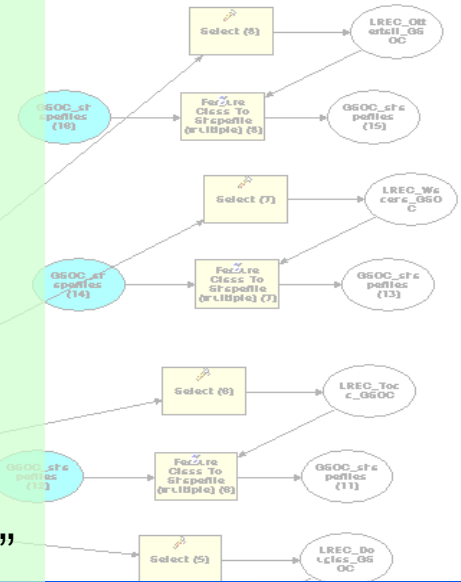
- o What processes do you need to do?
- o Which tools will accomplish these processes?
- o What data do you need for various processes & tools?

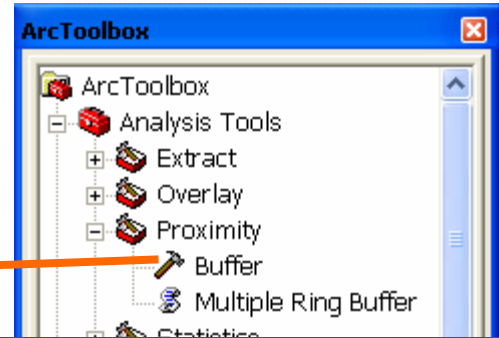
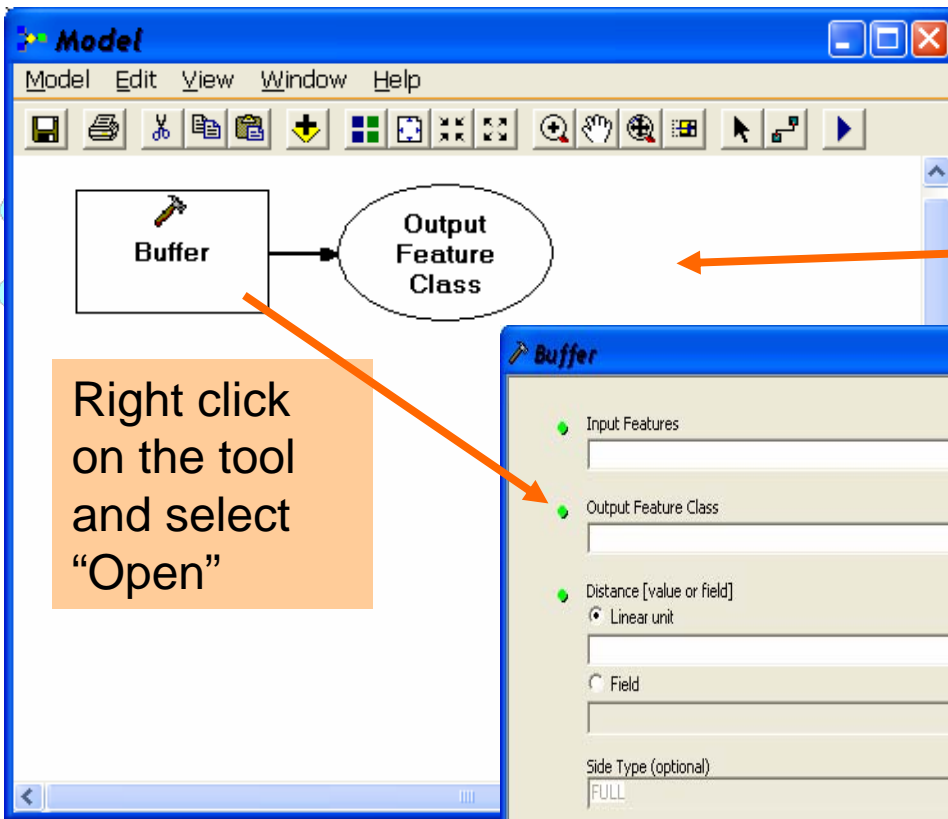
2. BACK-UP YOUR DATA!!

3. Open ArcToolbox in Desktop or Catalog

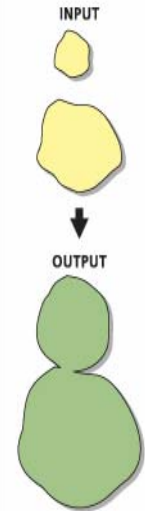
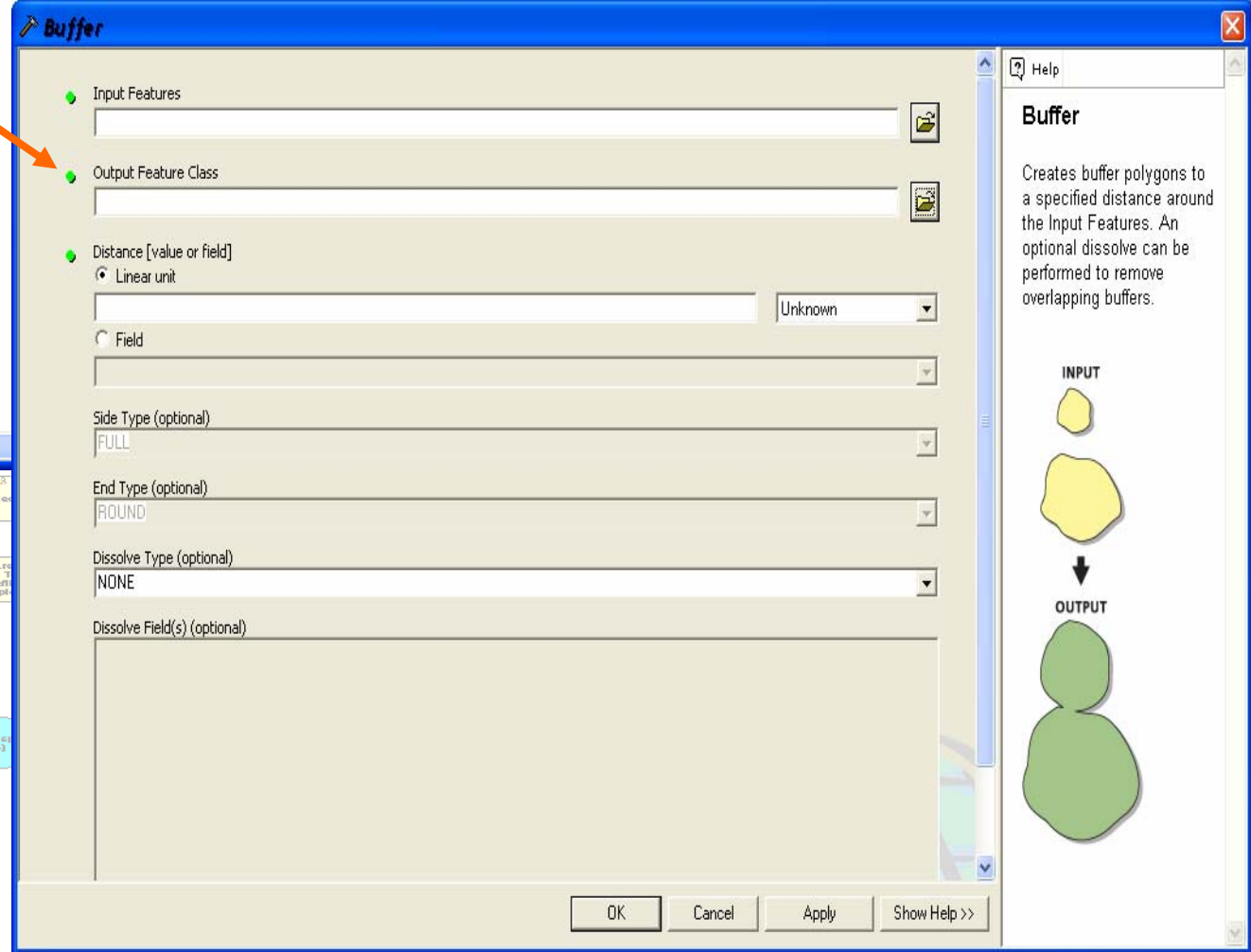
4. Right click in open area & select "New Toolbox", name the toolbox

5. Right click on your new toolbox and select "New" → "Model"





Right click on the tool and select "Open"



Buffer

Input Features
 C:\P2p_demo\GIS25057.mdb\ELECTRIC\PriUGElectricLineSegment

Output Feature Class
 C:\P2p_demo\GIS25057.mdb\ELECTRIC\PriUGElectricLineSegment_Buf

Distance [value or field]
 Linear unit
 750 Feet

Field

Side Type (optional)
 FULL

End Type (optional)
 ROUND

Dissolve Type (optional)
 NONE

Dissolve Field(s) (optional)

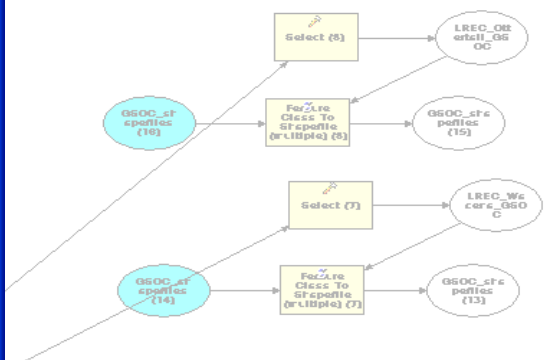
- OBJECTID
- Enabled
- WORK_INITIATION_ID
- InstallationDate
- LengthSource
- MeasuredLength
- SubtypeCD
- OBJ_NO
- ElectricLineObjectID

OK Cancel Apply Show Help >>

Dissolve Field(s) (optional)

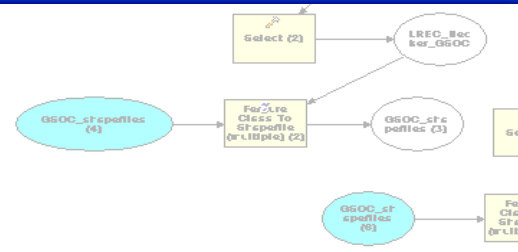
List of field(s) for the dissolve. Buffer polygons that share the same set of values in their Dissolve Field(s) will be dissolved together.

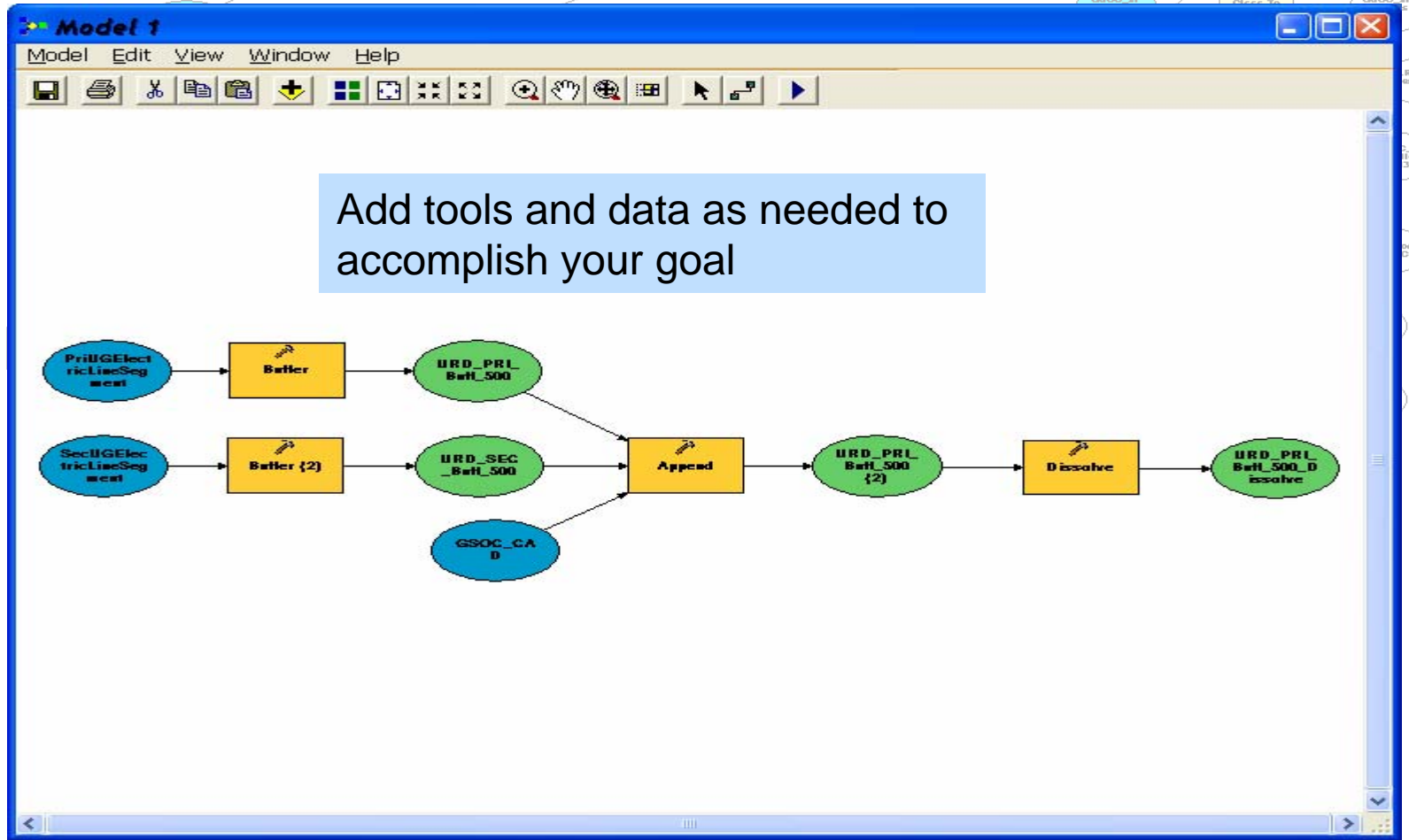
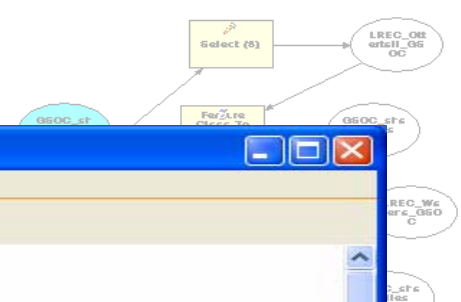
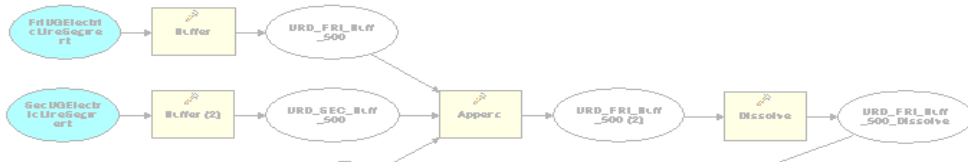
The Add Field button, which is used only in ModelBuilder, allows you to add expected field(s) so you can complete the dialog and continue to build your model.



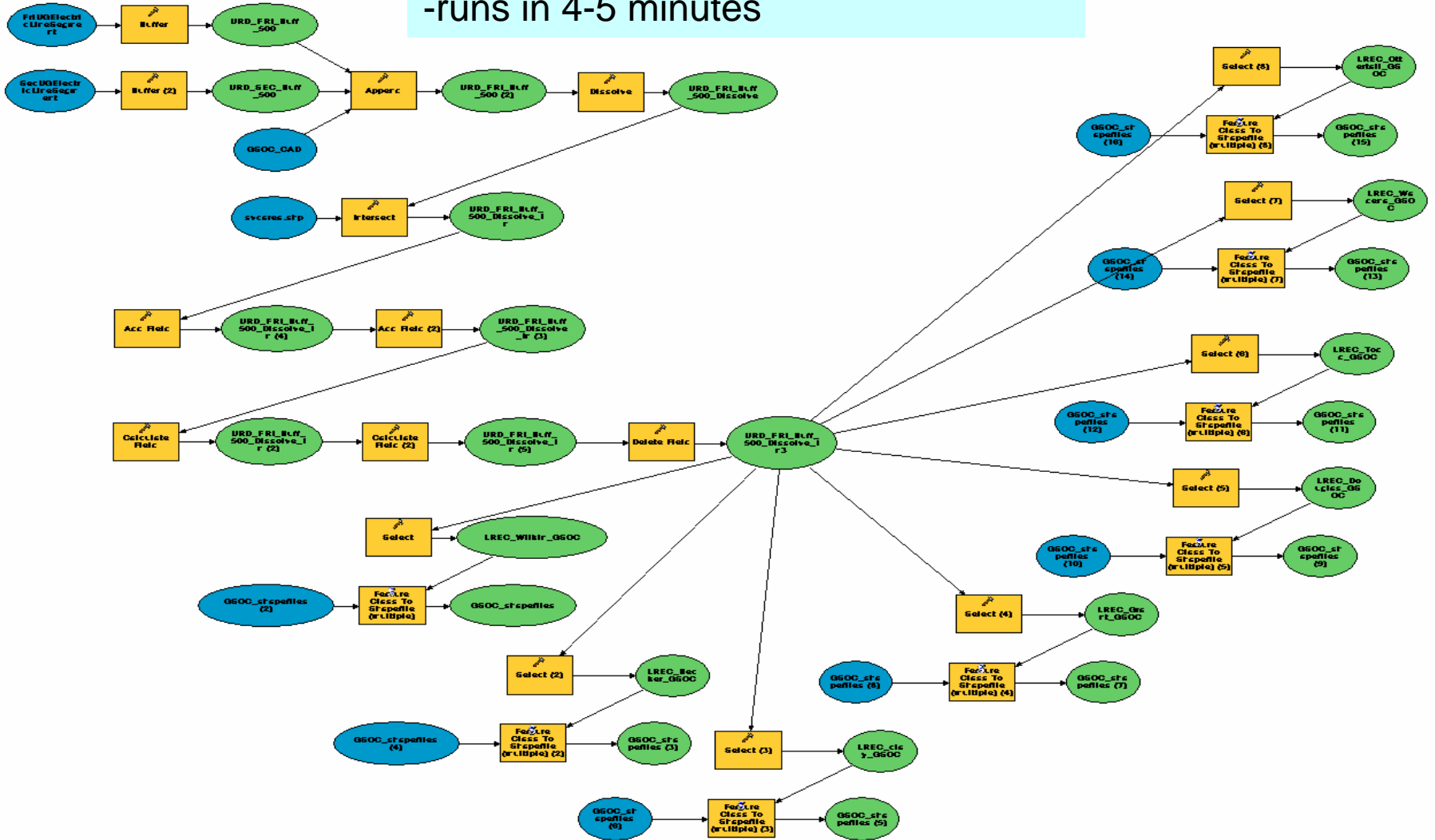
Model

Model Edit View Window Help





-26 processes
 -creates 8 sets of shapefiles
 -runs in 4-5 minutes

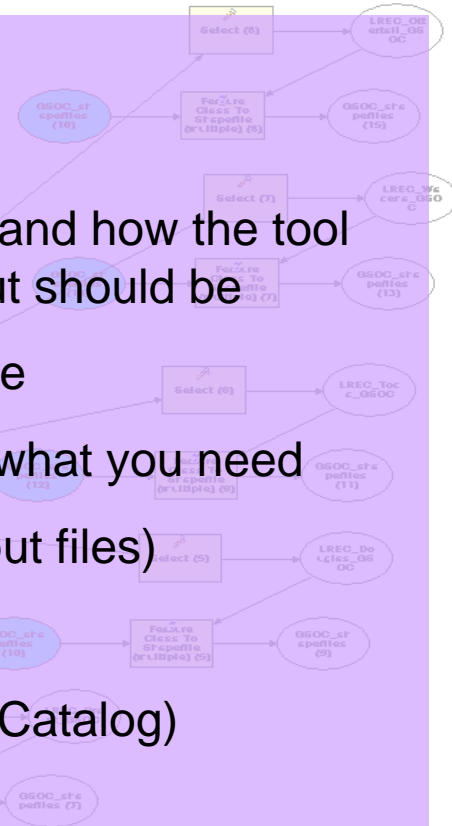




Sec Select Class to Report

Hints & Tips for successful model building:

1. BACK-UP YOUR DATA
2. Work with the tools and read the “help info” to understand how the tool works & what it’s inputs need to be and what it’s output should be
3. Start with simple models, 2-4 tools and build from there
4. Test your model periodically, make sure the output is what you need
5. Validate your model before re-running (cleans up output files)
6. Save your model periodically
7. Models are stored where they are made (Desktop vs. Catalog)
8. BACK-UP YOUR DATA



FURTHER RESOURCES:

Pine to Prairie GIS Users Group web forum:

<http://gis.pinetoprairie.org/>

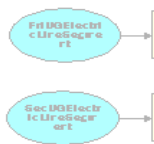
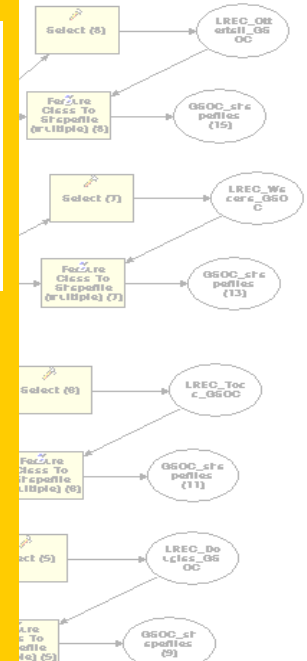
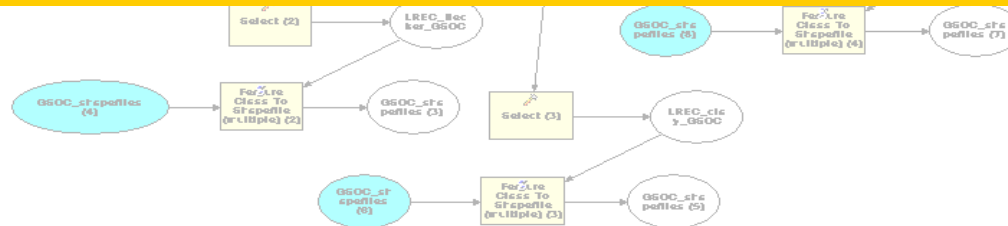


ESRI forums:

<http://support.esri.com/index.cfm?fa=forums.gateway>

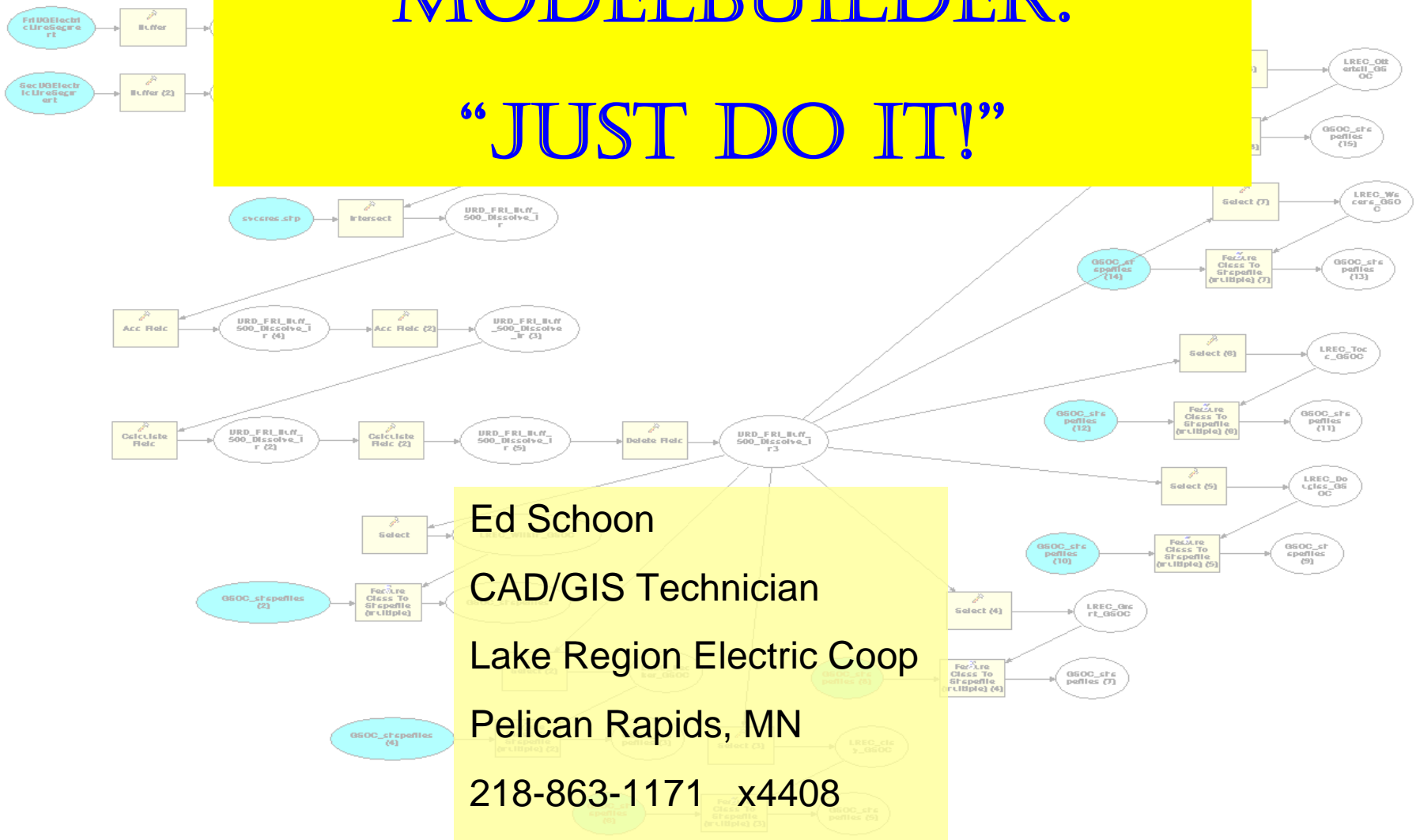
ESRI Utilities and Transportation forums:

<http://forums.esri.com/forums.asp?c=140>



MODEL BUILDER:

“JUST DO IT!”



Ed Schoon
CAD/GIS Technician
Lake Region Electric Coop
Pelican Rapids, MN
218-863-1171 x4408
eschoon@lrec.coop